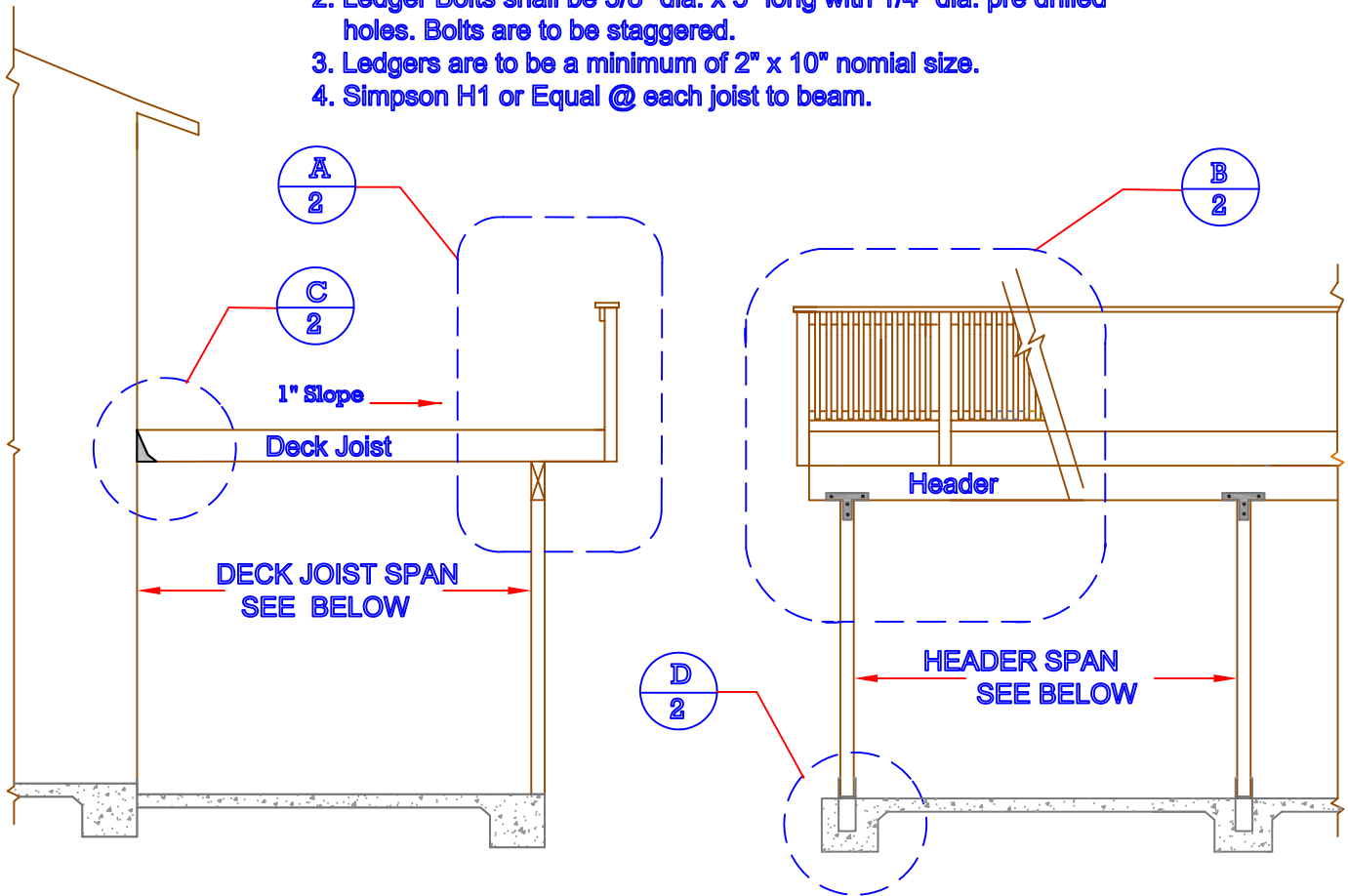


NOTES:

1. All lumber shall be Douglas Fir #2 grade or better.
2. Ledger Bolts shall be 3/8" dia. x 5" long with 1/4" dia. pre drilled holes. Bolts are to be staggered.
3. Ledgers are to be a minimum of 2" x 10" nominal size.
4. Simpson H1 or Equal @ each joist to beam.



HEADER SPAN

| IF JOIST SPAN IS..... | AND HEADER SPAN IS.... | THEN THE MINIMUM HEADER SIZE IS: | AND THE MINIMUM FOOTING SIZE IS: |
|-----------------------|------------------------|----------------------------------|----------------------------------|
| Up to 14' | Up to 8' | 4" X 10" | 18" sq. x 18" deep |
| Up to 14' | Up to 10' | 4" X 12" | 18" sq. x 18" deep |

DECK JOIST SPAN

| SIZE | SPACING | SPAN |
|---------|----------|----------|
| 2" X 8" | 12" o.c. | 14' - 0" |

SHEAR WALL MAY NOT BE MODIFIED UNLESS STRUCTURAL CALCULATIONS ARE SUBMITTED AND APPROVED BY THE BUILDING DEPARTMENT



Development Department
Building Division

Balcony / Deck Standard
Page 1 of 2

14343 Civic Drive
Victorville, CA 92383

(760) 955-5100
Fax (760) 269-0073

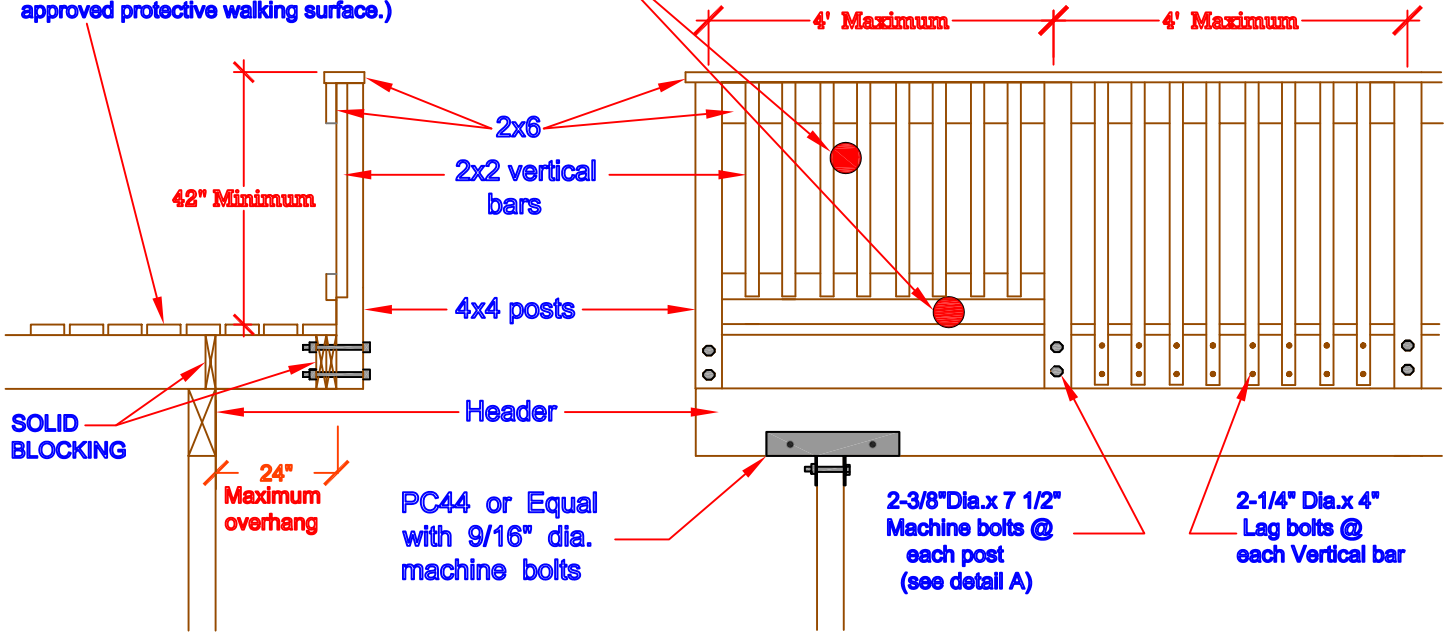
Rev. 5/10/06

Decking to be a minimum of 2 x 6.
 (ALTERNATE: 5/8" min. "CDX" plywood with an approved protective walking surface.)

SPACING TO BE SUCH THAT A 4" BALL CANNOT PASS THROUGH

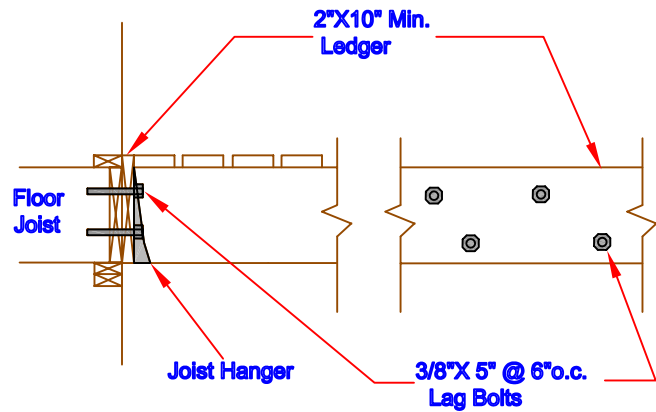
OPTION # 1

OPTION # 2

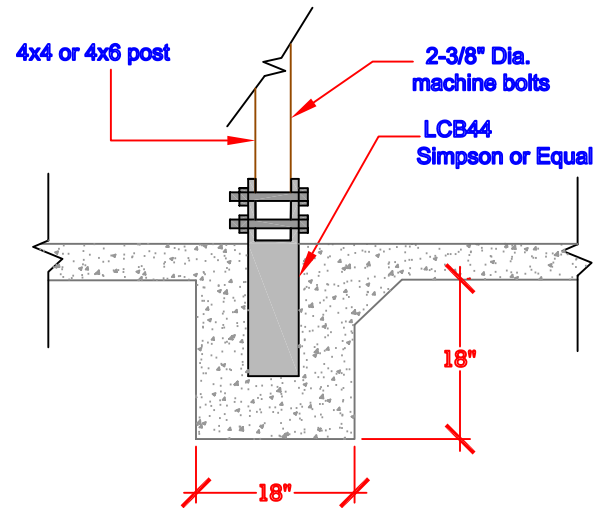


Railing Section (A)

Railing, Post, & Beam Detail (B)



Ledger Detail (C)



Post Base & Footing Detail (D)

This deck connection detail is based on the assumption that a minimum 1 1/2" wide rim joist is adequately installed at all edges of the 2nd floor diaphragm. If any other material is used, such as TJI joist, a special engineered design will be required. It is the owner's responsibility to verify the presence of the appropriate rim joist.



| | | |
|---|--------------------------------------|--------------|
| Development Department Building Division | | |
| Balcony / Deck Standard Page 2 of 2 | | |
| 14343 Civic Drive Victorville, CA 92393 | (760) 955-5100 Fax (760) 269-0073 | Rev. 5/10/06 |